

BRUNTON

RESIDENTIAL



BORAGE CLOSE, FAIRMOOR MEADOWS, MORPETH, NE61

£157,500

BRUNTON

RESIDENTIAL





BRUNTON

RESIDENTIAL



BRUNTON

RESIDENTIAL



THREE BEDROOM | END LINK | REDUCED VALUE SCHEME

A well-presented townhouse situated on Borage Close, within the desirable Fairmoor Meadows development in Morpeth. This property features three well-proportioned bedrooms, a lovely rear garden, and off-street parking for two vehicles.

Located in the sought-after town of Morpeth, this home offers convenient access to a range of local amenities, including shops, parks, and schools, as well as excellent transport links, ensuring easy connections to surrounding areas.

This property is part of a council affordable housing scheme and subject to criteria. Contact us for details.

BRUNTON

RESIDENTIAL



BRUNTON

RESIDENTIAL

Upon entering, the entrance lobby leads into a well-presented living room, which gives access into the dining/ kitchen. The kitchen is fitted with modern wall and base units along with integrated appliances. French doors open onto the landscaped rear garden, designed for low maintenance, featuring astro turf and a good-sized storage shed. A ground floor WC completes this level.

The first-floor landing provides access to two double bedrooms and the family bathroom, equipped with a bath, overhead shower, washbasin and WC.

On the top floor, the master suite benefits storage into the eaves, with velux windows.



BRUNTON

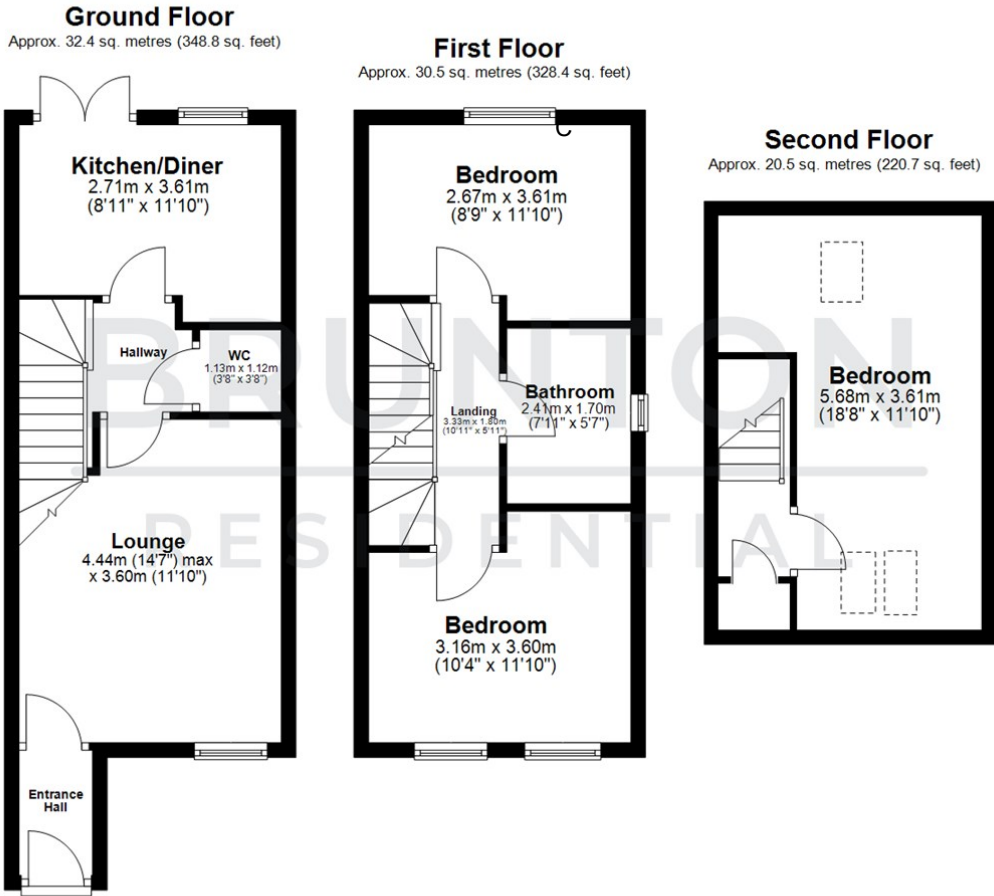
RESIDENTIAL

TENURE : Freehold

LOCAL AUTHORITY : Northumberland
County Council

COUNCIL TAX BAND : C

EPC RATING : B



All measurements are approximate and are for illustration only.
Plan produced using PlanUp.



Energy Efficiency Rating		
	Current	Potential
Very energy efficient - lower running costs		
(92 plus) A		92
(81-91) B	81	
(69-80) C		
(55-68) D		
(39-54) E		
(21-38) F		
(1-20) G		
Not energy efficient - higher running costs		
EU Directive 2002/91/EC		
England & Wales		

Environmental Impact (CO ₂) Rating		
	Current	Potential
Very environmentally friendly - lower CO ₂ emissions		
(92 plus) A		
(81-91) B		
(69-80) C		
(55-68) D		
(39-54) E		
(21-38) F		
(1-20) G		
Not environmentally friendly - higher CO ₂ emissions		
EU Directive 2002/91/EC		
England & Wales		